



Swiss French Magic With French Riviera

11 Days | 3 Countries | 19 Sightseeing & Experiences

INCLUSIONS



Sightseeing



Hotels



Inter-City
Transfer



Meals



Experience
Manager

Thomas Cook (I) Ltd.

Advantage



Thoughtfully Curated Itineraries, Highly Rated by our Customers.

Curated Indian Meals with a Taste of Local Cuisine



Most Experienced Tour Managers

Exclusive Experiences & Destinations that only We Offer.



Exclusive Offers on Shopping

Highest rated Holiday Brand



EUROPE TOUR ROUTE





TOUR HIGHLIGHTS

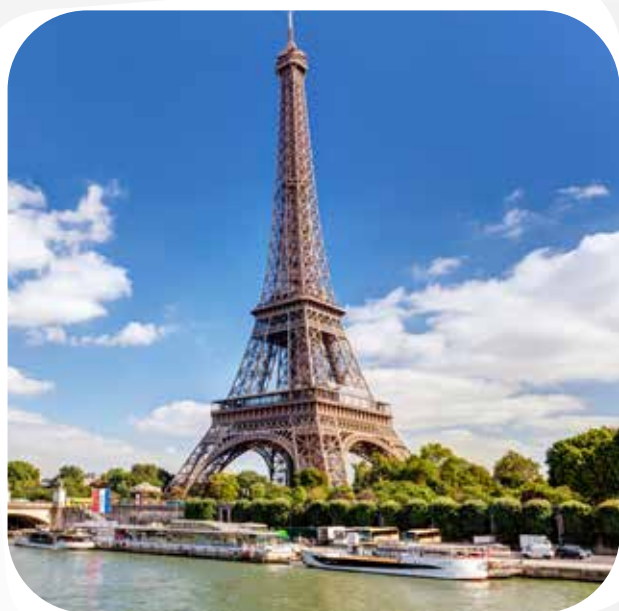
SWITZERLAND

- Excursion to Jungfrauoch with lunch and Interlaken
- Orientation tour of Zurich
- Cruise on Lake Zurich
- Visit Lindt: Home of Chocolate
- Orientation tour of Lucerne
- Visit Glacier 3000
- Orientation Tour of Saanen & Gstaad
- Ride on the Scenic Golden Pass Train



FRANCE

- Guided city tour of Paris
- Seine river cruise
- Guided Tour of Versailles Palace
- Visit 3rd level of Eiffel Tower
- Illumination Tour of Paris
- Visit Disneyland® Paris (01 Day 01 Park)
- Orientation tour of Nice
- Guided tour of Cannes
- Visit Eze Village
- Visit Fragonard – French Perfume Museum
- Guided tour of Marseilles with mini train ride



MONACO

- Guided tour of Monaco & Montecarlo



Inclusions



ACCOMMODATION

- 02 Nights at Hotel Novotel Zurich Messe / Movenpick / Courtyard by Marriott or similar in Zurich, **Switzerland**.
- 02 Nights at Hotel Novotel / Agora by Fassbind / Central Residence / Eurotel Victoria or similar in Lausanne / Leysin / Villars, **Switzerland**.
- 03 Nights at nights at Hotel Courtyard by Marriott / Hilton CDG / Hyatt CDG or similar in Paris (CDG Area), **France**.
- 03 Nights at Park Inn / Novotel / Holiday Inn or similar in Nice/ Antibes, **France**.



MEALS

- Daily Continental Breakfast (Breakfast includes Bread with Butter, Jam, Cereals, Juice, Milk & Coffee).
- 08 Indian Jain / Vegetarian / Non-Vegetarian Lunches.
- 10 Indian Jain / Vegetarian / Non-Vegetarian Dinners.

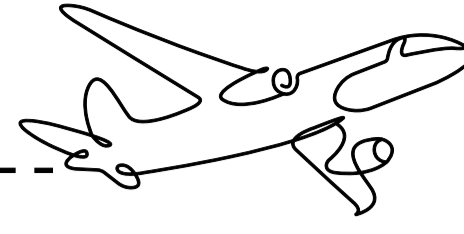
Note: Packed lunches, if applicable, will be Jain / vegetarian. In certain places, there is a possibility of providing cash out to the passengers instead of packed lunches.

WHAT'S MORE?



- Champagne lunch at Top of Jungfraujoch.
- Chocolate tasting at Lindt: Home of Chocolate.
- Fondue lunch at Glacier 3000
- Illumination tour of Paris.
- Travel in Style in TGV from Paris to Nice
- Mini train ride at Marseille

YOUR ITINERARY



Day 1

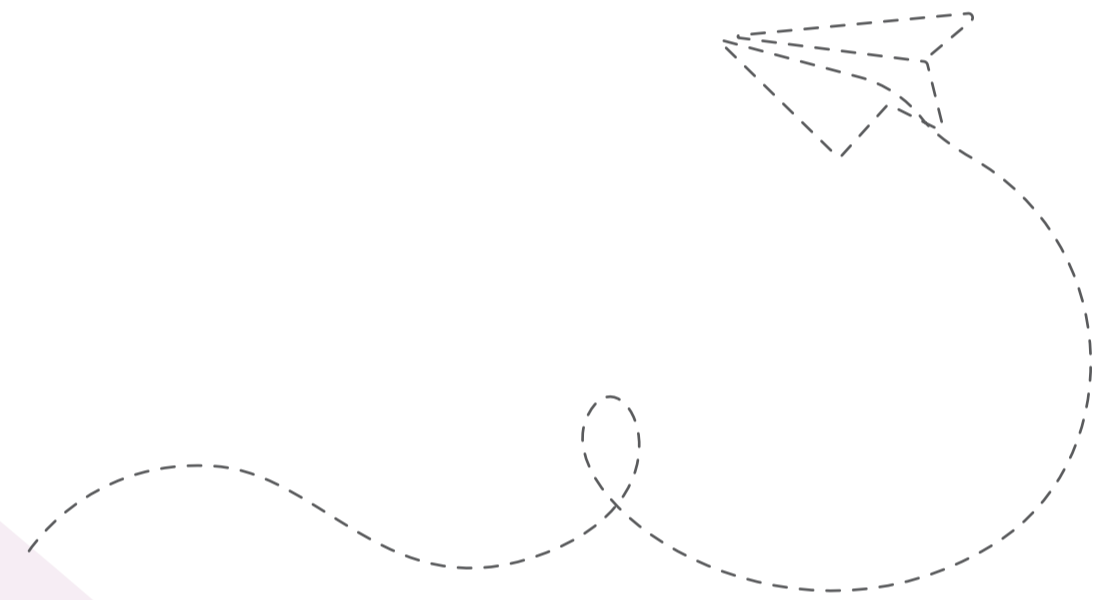


Welcome to Zurich !

On arrival, our Tour Manager / Local Representative will meet and welcome you outside the Airport. Later, we proceed to the hotel and check-in.

**Overnight in Zurich, Switzerland.
(D)**

Note: Joining direct passenger / NRI can check-in on your own at the hotel. The standard check-in time is 1500 hrs. We may have to proceed directly for dinner or packed dinner will be provided in case of late arrivals of flight or long queue at the immigration.



Orientation tour of Zurich – Cruise on Lake Zurich - Visit Lindt: Home of Chocolate - Orientation Tour of Lucerne

Today, we proceed for an Orientation tour of Zurich where we explore the historic Old Town with its winding streets and iconic churches. Next, we enjoy a cruise on Lake Zurich. Later we proceed to Lindt: Home of Chocolate; where we get to discover Switzerland's oldest chocolate brands and get to learn the art of chocolate making. In the evening, we proceed to Lucerne. On arrival we enjoy an orientation tour: See the Lion Monument, and Kapel Brücke with some free time to shop for famous Swiss watches, knives and chocolates.

**Overnight in Zurich, Switzerland
(B, L, D)**

Note: If Lindt is not available, we shall take the group to an alternate Chocolate experience.

Day 2



Day 3

Excursion to Jungfrauoch with Lunch & Interlaken

Today, we proceed for an excursion to Jungfrauoch - The Top of Europe. We take the cable car followed by a cogwheel train up to a height of 3,454 meters to Europe's highest railway station. Visit the Ice Palace and the Sphinx observatory deck to view the longest glacier in the Alps. Enjoy lunch on Top. Later, descend and visit Interlaken.

**Overnight in Lausanne / Leysin / Villars, Switzerland
(B, L, D)**

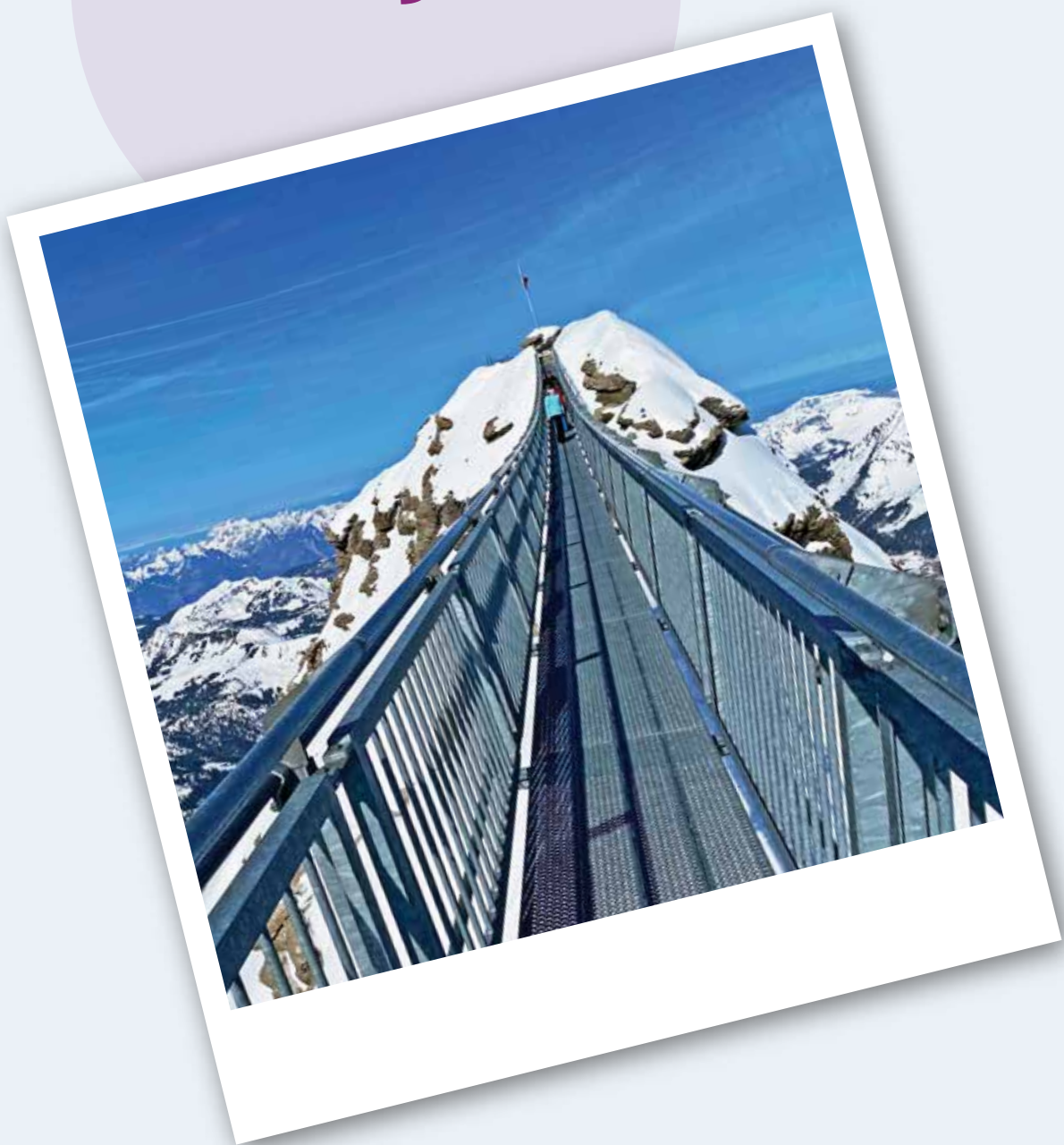


Day 4

Glacier 3000 - Orientation tour of Saanen & Gstaad – Golden Pass Train

Today, we proceed on an excursion to Glacier 3000. Enjoy breath-taking views of the iconic mountains such as Mont-Blanc, the Matterhorn, Eiger, Mönch and Jungfrau from the Tissot Peak Walk. Next, we enjoy an orientation tour of Saanen & Gstaad - a shooting location for Indian films. Later, we board the scenic Golden Pass train and enjoy panoramic views as we journey through alpine forest and picturesque villages.

**Overnight in Lausanne / Leysin / Villars, Switzerland
(B, L, D)**



Day 5



Onto Paris

Today, we proceed for a scenic drive to Paris. Upon arrival, we check in to the hotel.

**Overnight in Paris, France
(B, PL, D)**



Day 6

Guided city tour of Paris – Seine River cruise – Guided tour of Versailles Palace – Eiffel Tower (3rd Level) – Illumination Tour of Paris

Today, we proceed on a Guided Tour of Paris: See the Alexander Bridge, Arc de Triomphe, Concorde Square, Opera House and Les Invalides. Next, proceed for a scenic cruise on River Seine. Later, take a Guided Tour of Versailles Palace with private apartments, Opera Hall, the Chapel & Hall of Mirrors. Next, we visit the Eiffel Tower (3rd level). Later in the evening, we proceed for an 'Illumination Tour of Paris' and see Paris by night, with some of the city's famous monuments / sights lit up.

**Overnight in Paris, France.
(B, L, D)**

Note: • *Visiting Eiffel Tower 3rd Level is subject to availability due to weather conditions / temporary operational closures. In case of such, the group shall visit the Eiffel Tower up till 2nd Level.*

• *Due to stringent security checks at the Eiffel Tower, it may take up to 4 – 5 hours in the queue.*

Day 7

Disneyland® Paris (01 Day 01 Park)

Today, we proceed to Disneyland® Paris where you can visit Disneyland® Park OR Walt Disney Studios® Park. Get charmed by Sleeping Beauty Castle, enjoy exciting rollercoaster rides, meet Alice in Wonderland, Pinocchio and others in Fantasyland as well as travelling to the four corners of the globe in Adventure Land.

Overnight in Paris, France.

(B, PL, D)



Day 8



TGV to Nice – Orientation tour of Nice

Today, we check out and proceed to the train station to board a TGV to Nice. Upon arrival we proceed for an Orientation tour of Nice; a mediterranean tourist centre in southeastern France, sheltered by beautiful hills, and pleasant climate, it is also a leading resort city of the French Riviera.

Overnight in Nice/ Antibes, France. (B, D)

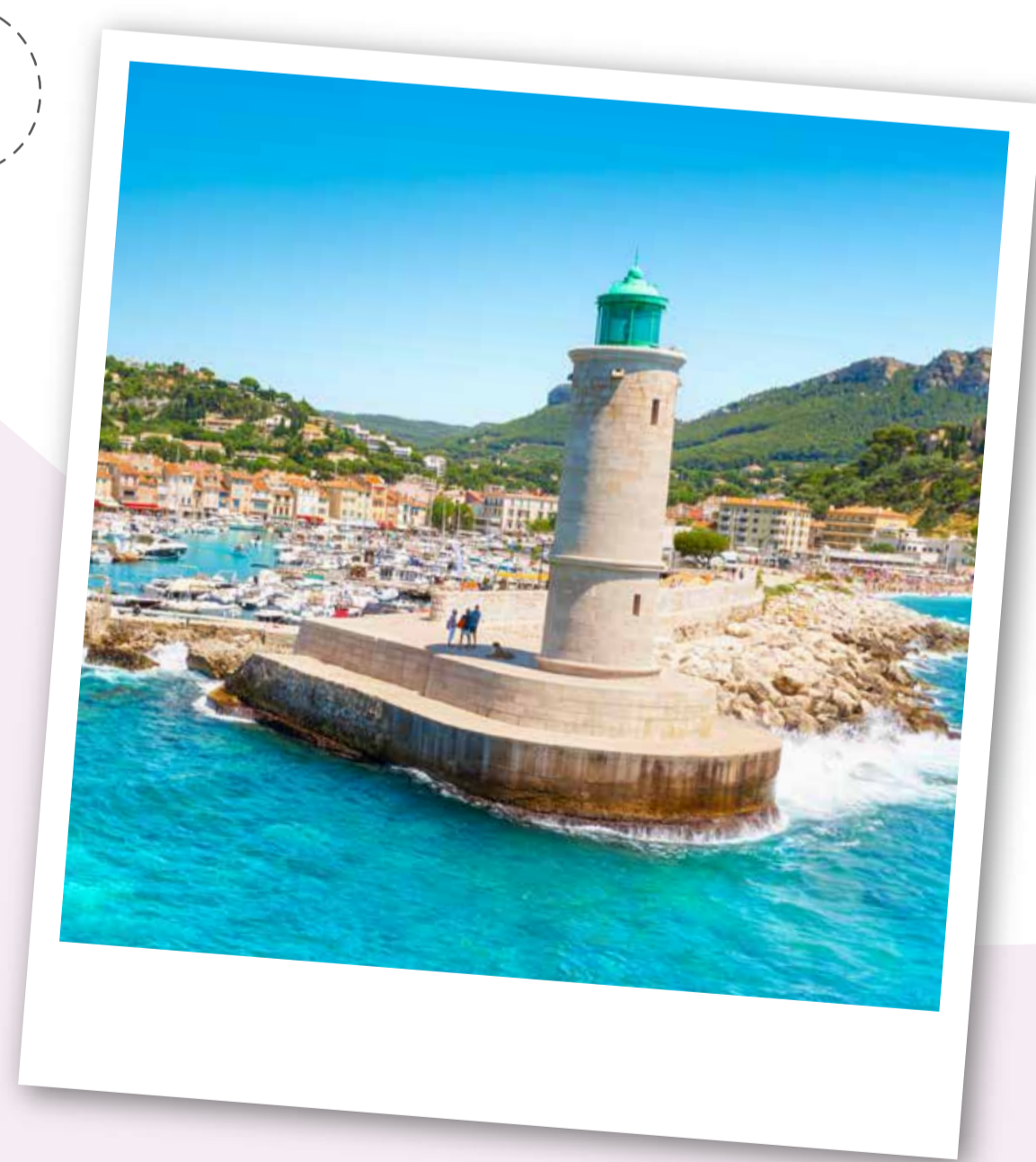
Day 9



Guided city tour of Cannes – Guided city tour of Monaco - Guided city tour of Montecarlo – Visit Eze Village – Visit Fragonard: French Perfume Museum

Today, we proceed for guided city tours of the scenic towns of the French Riviera. Firstly, we visit Cannes where we see the Palais des Festivals and explore the charming old town of Le Suquet for its stunning views. Here we also get to see the church of Notre-Dame d'Esperance and get a glimpse of the local markets. Then we proceed to Monaco and Montecarlo; where we get to see the historic Prince's Palace, Cathedral de Monaco, Montecarlo Casino and the Oceanographic Museum. Later, we visit Eze Village, a stunning medieval hilltop town perched high above the French Riviera, known for its breathtaking views and charming narrow streets. The village features beautifully preserved stone buildings, vibrant bougainvillea, and artisanal shops that offer local crafts and perfumes. Later, we visit the Famous French perfume museum – Fragonard. **Overnight in Nice/ Antibes, France. (B, L, D)**

Day 10



Guided city tour of Marseilles with mini train ride

Today, we proceed for a guided city tour of Marseille; see the bustling Vieux Port, the iconic Basilique Notre-Dame de la Garde and the Le Panier district. Then we proceed to see the Palais des Congrès and the MuCEM (Museum of European and Mediterranean Civilizations). Here we take a mini train ride with routes taking in the Corniche & Old City. **Overnight in Nice/ Antibes, France. (B, L, D)**

Day 11



Fly back home with pleasant memories!

Today, we proceed to Nice airport for your flight back home. Kindly spare a few minutes to share your feedback with your Tour Manager. Your valued suggestions will be most appreciated. Arrive home with pleasant memories of your Europe tour, which we are sure you will treasure for a lifetime. (B)

Note: • *Due to flight connectivity, few groups may depart out of Milan instead of Nice. Kindly check with your sales staff for your exact flight details.* • *In major European cities, there are parking restrictions for coaches and it is not possible to stop at all the places during the city tour. Your Tour Manager will try his/her best to stop coach wherever possible for a photo stop.* • *Arrival / Departure Transfers will be provided subject to minimum 4 passengers travelling together.*

DEPARTURE DATES	
April'26	17, 24
May'26	1, 15, 22
June'26	5, 12, 26
July'26	10
August'26	14
September'26	11

11 Days - Swiss French Magic With French Riviera (Tour Price per person)			
Twin/ Triple	Child with Bed	Child No Bed	Infant
USD 3,800	USD 2,955	USD 2,615	USD 100

Single room supplement USD 1,065 per person. *As a 3rd in a triple, a roll away cot may be provided. **As a 3rd in a double, no bed or cot will be provided to the child. Person below 12 years will be considered as a Child. • Maximum 3 persons are allowed per room.

What Your Tour Price Includes

- Sightseeing and accommodation as per the above-mentioned itinerary.
- All transfers and extensive excursions with entrance fees (as specified in the itinerary) by a deluxe air-conditioned coach.
- Services of a professional, friendly and multilingual Tour Manager or a local Representative. (Subject to minimum 15 customers).

What Your Tour Price Does Not Include

- Air tickets required to participate in this tour.
- Visa charges, Insurance, Airport & Port taxes.
- Tipping is expected from anyone providing your service e.g., Coach Driver, Local Guides, Hotel & Restaurant staff etc. It is mandatory to tip a nominal amount of EUR 3 per person/per day. For the entire duration of this tour, which is 11 Days, the total Tips amount is EUR 33 per person to be paid to the Tour Manager on Day 01 of the tour.
- No portage included.
- Any expenses of a personal nature such as portage, laundry expenses, wines, mineral water, food and drink not in the

regular menu provided by us, minibar, telephone calls, etc.

- Meals other than that are mentioned in your itinerary.
- Cost of excursions, city sightseeing, entrance fees and local guides availed of by the passengers, other than that mentioned in your itinerary.
- Airport transfers, Cost of Suggested / Optional Excursions.

Visa Requirements

- You must be in possession of a Multiple Entry Schengen visa. The cost of visa is not included in your package tour price. It would be best to check with nearest consulates or embassy or your travel agent for visa information. Please ensure that your travel documents are ready in time before your tour date.

Ticketing Requirements

- For this tour you would require confirmed air tickets to arrive into Zurich and depart from Nice. It would be advisable to check with your sales officer or local travel agent for ticketing.

IMPORTANT NOTES

Joining Direct Clients

- Main Sector air tickets to reach the first overnight city and last departure city is not included in the Joining Direct package price.
- Arrival and Departure Transfers are not included in the package price.
- The Tour Manager shall meet the clients directly at the hotel.

Hotels

- All hotels will be either around the airport area or on the outskirts.
- The hotel room size in Europe would be up to 16 – 18 sq. mts.
- Most hotels in Europe have only Twin beds. The double bed will be Queen size and not King size.
- As a 3rd person in a triple room, most hotels use rollaway beds and room size may be the same as the double room.
- For Child with bed: At times hotel don't have enough roll away beds, in that case they might give a double and a separate single room.
- A person 11.99 years and below is considered a child and 12 years and above, an adult.
- Hotel rooms may not be air conditioned / air cooled nor will fans be provided. Air conditioning / cooling in hotels are set as per European weather conditions.
- Functioning of Air cooling / Air conditioning in hotels is subject to official declaration of summer by the local authority.
- During heat wave in Europe air conditioning of the hotels and coaches may cease to function as they are not built for such high temperatures.
- Most hotels in Europe do not provide tea kettles in the rooms.
- Due to international events and trade fairs all throughout Europe such as the Air Show, music festivals, ice skating championships etc., you may have to stay in hotels further away from the city.
- In Switzerland the stay may be split in two hotels.
- Any damage caused to the hotel rooms / Coach during your stay shall be payable by the passengers.
- We also reserve the right to substitute a hotel of similar class if it is deemed advisable or necessary.
- In certain cities hotels have not started the buffet breakfasts yet and if the same does not change by the time the tours begin, we will either provide breakfast or the groups will be taken to an Indian / local restaurant for breakfast.

Coaches

- Most of your journey in Europe is by coach and hence you are requested to keep the coach clean.
- Due to hygienic reasons, it is not permitted to use toilets on the coach. However, the tour manager will make comfort stops during long drives.
- Eating & drinking is not permitted on the coach.
- One check-in bag and one handbag per person only, due to limited boot space on the coach.
- In major European cities, there are parking restrictions for coaches, and it may not be possible to stop at all the places during the city tour. Tour Manager will try his/her best to stop coach wherever possible for a photo stop.
- Coaches are non-wheelchair compliant. There are steps to board / alight from the coach.
- Due to private coaches being forbidden inside most of the European cities, as per EU norms to preserve them and to avoid getting them polluted and overcrowded, most of your sightseeing will be done by local buses and on foot.

Meals

- Meals are pre-set and a-la carte is not possible.
- On certain days, a packed lunch will be provided.

Sightseeing

- On certain departures, we may sometimes amend / reverse the itinerary. However, all the services / inclusions will remain the same.
- Generally, you will have to walk to sightseeing places, amusement parks and the airports sometimes for a long distance; however, the same will be timely instructed by the Tour Manager. It is advisable to carry a good pair of comfortable sports shoes. The tour manager and the driver will do their best to get you as close to the monuments as possible.
- The Eiffel Tower on certain Days due to strong wind conditions or being overcrowded or for security reasons may be closed.
- The lifts at the Eiffel tower are currently closed due to safety. Hence the visit to the tower is only allowed by climbing the staircase. In case there is no change in the same on tour customers will be refunded the amount for the same if they chose not to climb the stairs.
- Due to stringent security checks at the Eiffel tower, it may take up to 4-5 hours in the queue.
- No refund will be provided in case the group is unable to visit Eiffel Tower 3rd Level due to weather conditions / operational closures.

General

- On some occasions you may have to join another group in case the group does not have adequate members.
- A local representative or a driver may only be there to assist you during your initial part of the tour.
- Arrival and Departure flights should be booked according to the group flight timings. In case there is any sightseeing involved on the first or last day of the itinerary to avoid missing any of the services. Please check with your sales officer for the group flight timings.
- Security alerts and random closures might affect the itinerary.
- Please take extra care of your personal belongings while on the tour, every country you travel to is prone to thefts and bag snatching. TCIL will not be liable for any loss of belongings / baggage.
- Disabled clients should carry their own wheelchair and should be accompanied by a qualified companion who is able to provide assistance to the disabled client.
- TCIL shall not accept any liability or responsibility for any damages, loss, baggage loss, theft, injury, accident, death, breakdown or irregularity, which may occur in carrying out the tour arrangement, weather conditions, strikes, war, quarantine and any other cause whatsoever and all such loss or expense must be borne by the passengers. Insurance policies must be carried while on tour.
- The management reserves the right to claim any additional expenses incurred due to delays or changes in schedules of train, airplane, bus, ship or other services.
- The Tour Manager and the company reserves the right to amend the itinerary, alter, vary or withdraw any particular departure, excursion advertised. For the convenience of our passengers, we will sometimes amend the itinerary. However, all the services will remain the same.
- There are no refunds for any services i.e., meals, sightseeing etc. not utilized on your tour.
- All optional activities will have to be booked and paid to the Tour Manager on Day 01 of the tour. Payments to be made by cash in EURO only. (Credit or Debit cards not accepted).
- Optional tours are booked & paid on 100% non-refundable & non cancellation policy.
- The images used in this brochure are for representation purposes only.
- Please refer to the Booking Form for detailed "Terms and Conditions".