



Swiss French Delight

8 Days | 2 Countries | 9 Sightseeing & Experiences

INCLUSIONS



Sightseeing



Hotels



Inter-City
Transfer



Meals



Experience
Manager

Thomas Cook (I) Ltd. Advantage



Thoughtfully Curated
Itineraries, Highly Rated
by our Customers.

Curated Indian Meals
with a Taste of Local Cuisine



Most Experienced
Tour Managers

Exclusive Experiences
& Destinations
that only We Offer.

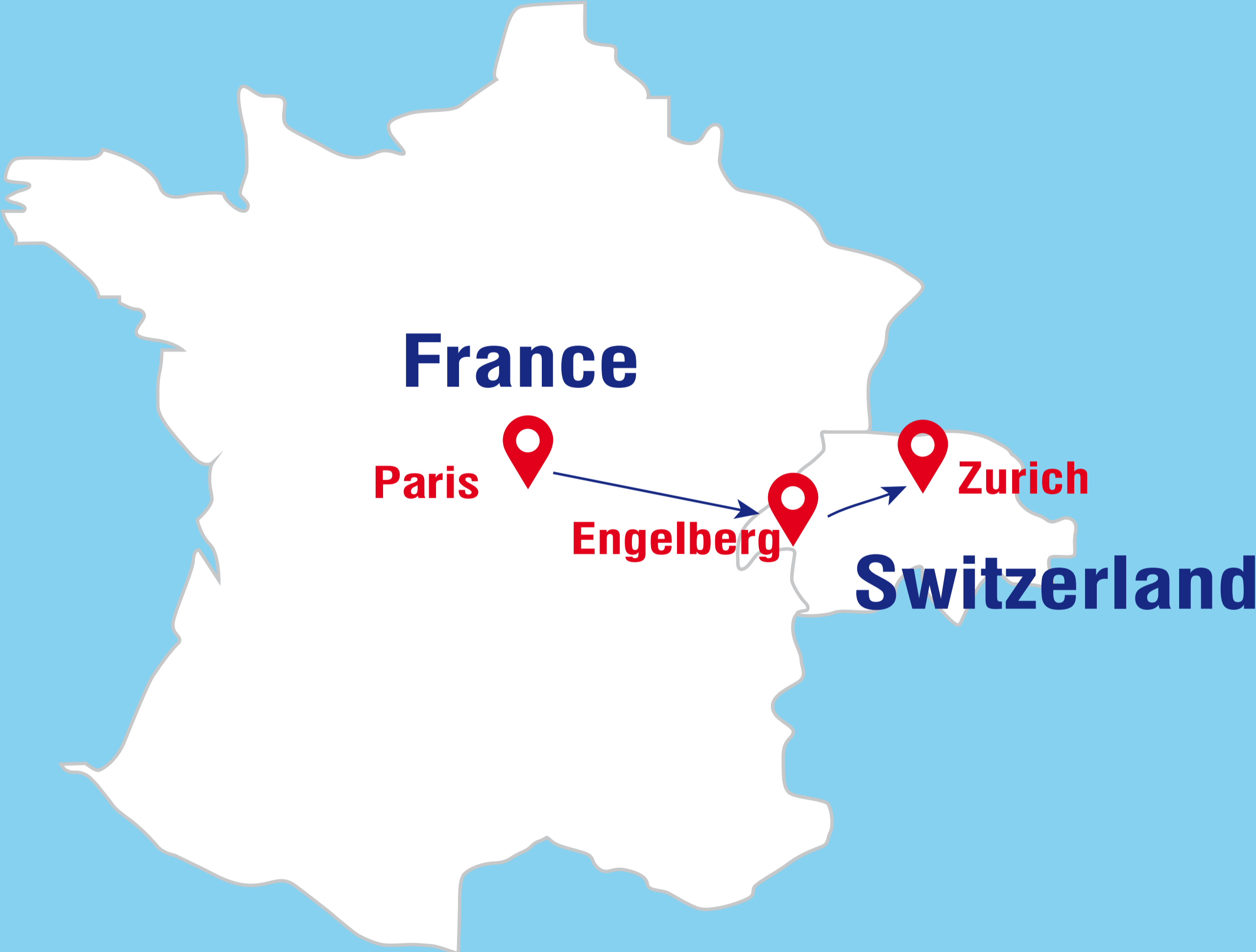


Exclusive Offers
on Shopping

Highest rated
Holiday Brand



EUROPE TOUR ROUTE





TOUR HIGHLIGHTS

FRANCE

- Guided city Tour of Paris
- Visit 2nd level of Eiffel Tower
- Visit Disneyland® Paris 01 Day 01 Park
- Seine River Cruise



SWITZERLAND

- Visit Mt. Titlis
- Orientation tour of Lucerne
- Chance to visit Jungfrauoch with lunch & Interlaken (OPTIONAL)
- Orientation tour of Bern
- Orientation tour of Zurich
- View the Rhine Falls



Inclusions

ACCOMMODATION



- 03 nights at Moxy CDG / Holiday Inn Express / Clarion or similar in Paris (CDG area), France.
- 02 nights at Terrace / Central or similar in Engelberg, Switzerland.
- 02 nights at Harry's Home / Holiday Inn Express or similar in Zurich, Switzerland.

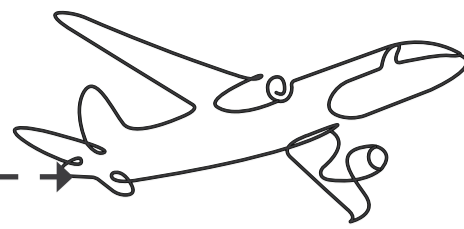


MEALS

- Daily Continental Breakfast (Breakfast includes Bread, Butter, Jam, Cereals, Juice, Milk & Coffee)
- 03 Indian Jain / Vegetarian / Non-Vegetarian Lunches.
- 07 Indian Jain / Vegetarian / Non-Vegetarian Dinners.

Note: Packed lunches, if applicable, will be Jain / vegetarian. In certain places, there is a possibility of providing cash out to the passengers instead of packed lunches.

YOUR ITINERARY



Day 1



Welcome to Paris!

On arrival, our Tour Manager / Station Manager / Local Representative will meet and welcome you outside the Airport. Later, we proceed to the hotel and check-in.

Overnight Paris (CDG Area), France. (D)

Guided city tour of Paris – Eiffel Tower Level 2 – Seine River Cruise

Today we proceed for a guided city tour of Paris: See the Alexander Bridge, Arc de Triomphe, Concorde Square, Opera House, Invalides and Champs Elysees. Next, visit the Eiffel Tower 2nd Level. Later, you enjoy a cruise on the Seine River.

Overnight in Paris (CDG Area), France. (B, L, D)

Note: Due to stringent security checks at the Eiffel Tower, it may take up to 4-5 hours in the queue.

Day 2



Visit Disneyland® Paris 01

Day 01 Park

Today, we visit the Disneyland® Paris where you can either visit Disneyland® Park OR Walt Disney Studios® Park. Get charmed by Sleeping Beauty Castle, enjoy exciting rollercoaster rides, meet Alice in Wonderland, Pinocchio and others in Fantasyland as well as travelling to the four corners of the globe in Adventureland.

Overnight in Paris (CDG Area), France (B, D)

Day 3



Day 4



Proceed to Switzerland

Today, we check out and proceed towards Engelberg. Upon arrival, we check in to the hotel.

Overnight in Engelberg, Switzerland. (B, D)

Day 5



Day at leisure OR Chance to visit Jungfrauoch with lunch and Interlaken (Optional)

Today, the day is at leisure OR you can join us for a visit to Jungfrauoch - The Top of Europe. We take the cable

car followed by a cogwheel train up to a height of 3,454 meters to Europe's highest railway station. Visit the Ice Palace and the Sphinx observatory deck to view the longest glacier in the Alps. Later, we visit Interlaken.

**Overnight in Engelberg, Switzerland.
(B, D)**

Note: Guests who do not opt for this Optional excursion will get packed dinner delivered at the hotel when the group arrives.

Visit Mt. Titlis – Orientation Tour of Lucerne

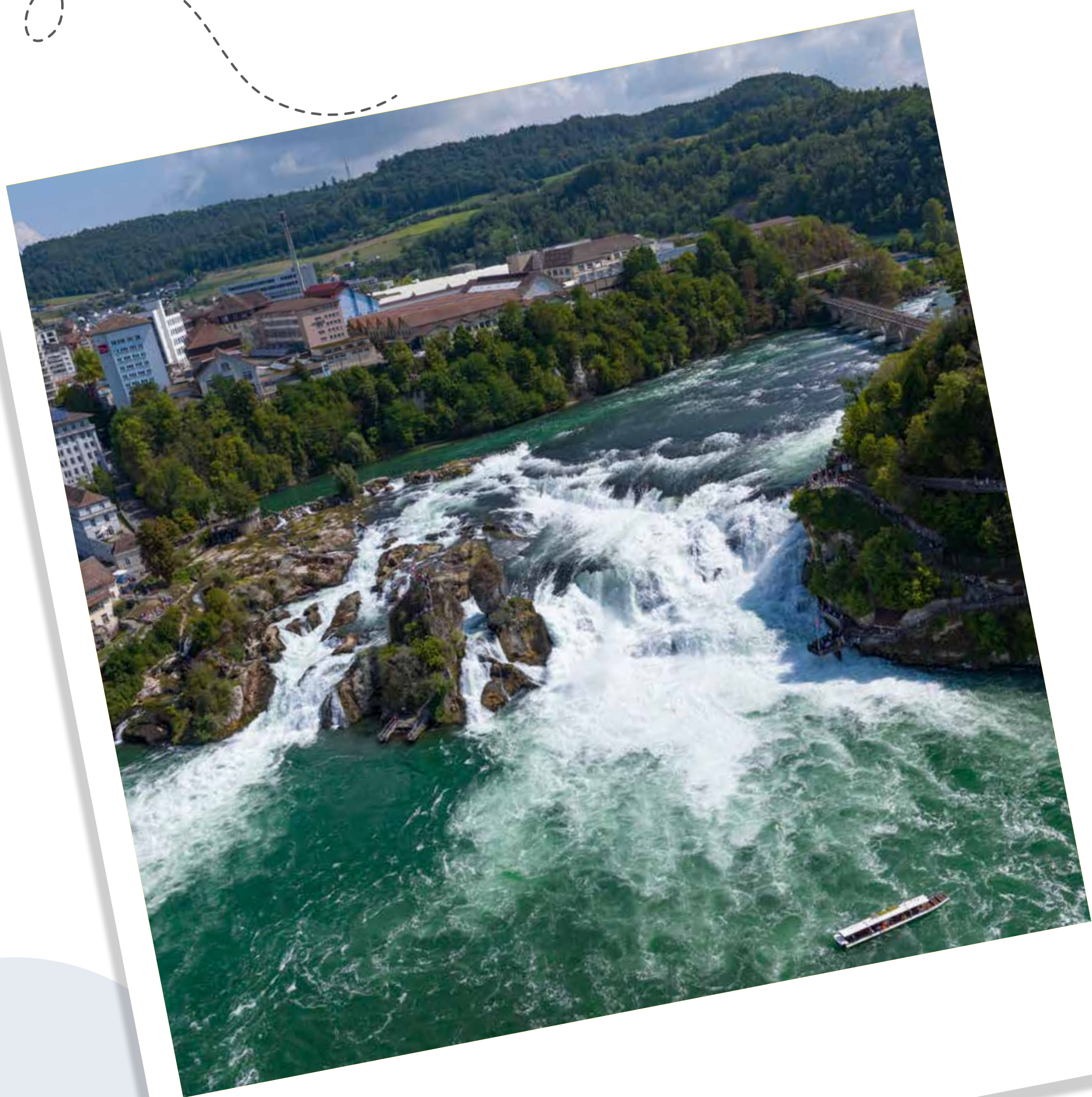
Today, we proceed to Mt Titlis where you will take cable car rides including the world's first rotating cable car, the Rotair – to the top of Mt. Titlis at 3,020 meters. Do visit the “Cliff Walk” - a suspension bridge along the cliff of Mt. Titlis.” Next, we

proceed for an Orientation Tour of Lucerne: See the Lion Monument, Kapell Brucke. Also, enjoy some free time to explore the town and shop for Swiss knives, Chocolates and Souvenirs.

**Overnight in Zurich, Switzerland.
(B, L, D)**

Day 6





Day 7

Orientation Tour of Bern – Orientation Tour of Zurich – View Rhine Falls

Today, we drive to the Swiss capital “Bern” where we do the Orientation tour of the city. Next, we proceed to Zurich for an orientation tour: See Lake Zurich, Graumunster and Fraumuster. Later, we proceed to Schaffhausen in Switzerland to see the Rhine falls.

Overnight in Zurich, Switzerland. (B, L, D)

Fly back home with pleasant memories!

Today we proceed to Zurich airport for your flight back home. Do spare a few minutes to share your feedback with your Tour Manager. Your valued suggestions will be most appreciated. Arrive home with pleasant memories of your European Tour, which we are sure you will treasure for a lifetime. (B)

Day 8



Note: • *Due to flight connectivity, few groups may depart out of Frankfurt instead of Zurich. Kindly check with your sales staff for your exact flight details.*

- *In major European cities, there are parking restrictions for coaches, and it is not possible to stop at all the places during the city tour. Your Tour Manager will try his/her best to stop coach wherever possible for a photo stop.*
- *Arrival / Departure Transfers will be provided subject to minimum 4 passengers travelling together.*

DEPARTURE DATES

April'26	24
May'26	8, 15, 22, 29
June'26	12, 26
July'26	10, 24
August'26	7
September'26	11

OPTIONAL TOUR

OPTIONAL TOUR	ADULT (EUR)	CHILD (EUR)
Visit Jungfrauoch with lunch and Interlaken	180	130

Note: Optional will be operated subject to minimum strength of 20 passengers.

8 Days - Swiss French Delight (Tour Price per person)

Twin/ Triple	Child with Bed	Child No Bed	Infant
USD 2,290	USD 1,750	USD 1,630	0

*Single room supplement USD 485 per person. *As a 3rd in a triple, a roll away cot may be provided. **As a 3rd in a double, no bed or cot will be provided to the child. Person below 12 years will be considered as a Child. • Maximum 3 persons are allowed per room.*

What Your Tour Price Includes

- Sightseeing and accommodation as per the above-mentioned itinerary.
- All transfers and extensive excursions with entrance fees (as specified in the itinerary) by a deluxe air-conditioned coach.
- Services of a professional, friendly and multilingual Tour Manager or a local Representative. (Subject to minimum 15 customers).

What Your Tour Price Does Not Include

- Air tickets required to participate in this tour.
- Visa charges, Insurance, Airport & Port taxes.
- Tipping is expected from anyone providing your service e.g., Coach Driver, Local Guides, Hotel & Restaurant staff etc. It is mandatory to tip a nominal amount of EUR 3 per person/per day. For the entire duration of this tour, which is 08 Days, the total Tips amount is EUR 24 per person to be paid to the Tour Manager on Day 01 of the tour.
- No portage included.
- Any expenses of a personal nature such as portage, laundry expenses, wines,

mineral water, food and drink not in the regular menu provided by us, minibar, telephone calls, etc.

- Meals other than that are mentioned in your itinerary.
- Cost of excursions, city sightseeing, entrance fees and local guides availed of by the passengers, other than that mentioned in your itinerary.
- Airport transfers, Cost of Suggested / Optional Excursions.

Visa Requirements

- You must be in possession of a Multiple entry Schengen Visa. The cost of visa is not included in your package tour price. It would be best to check with your travel agent and the consulates nearest to you for advice and information. Please ensure that your travel documents are ready in time for departure.

Ticketing Requirements

- For this tour you would require confirmed air tickets to arrive into Paris and depart from Zurich Airport. It would be advisable to check with your sales officer or local travel agent for ticketing.

IMPORTANT NOTES

Joining Direct Clients

- Main Sector air tickets to reach the first overnight city and last departure city is not included in the Joining Direct package price.
- Arrival and Departure Transfers are not included in the package price.
- The Tour Manager shall meet the clients directly at the hotel.

Hotels

- All hotels will be either around the airport area or on the outskirts.
- The hotel room size in Europe would be up to 16 – 18 sq. mts.
- Most hotels in Europe have only Twin beds. The double bed will be Queen size and not King size.
- As a 3rd person in a triple room, most hotels use rollaway beds and room size may be the same as the double room.
- For Child with bed: At times hotel don't have enough roll away beds, in that case they might give a double and a separate single room.
- A person 11.99 years and below is considered a child and 12 years and above, an adult.
- Hotel rooms may not be air conditioned / air cooled nor will fans be provided. Air conditioning / cooling in hotels are set as per European weather conditions.
- Functioning of Air cooling / Air conditioning in hotels is subject to official declaration of summer by the local authority.
- During heat wave in Europe air conditioning of the hotels and coaches may cease to function as they are not built for such high temperatures.
- Most hotels in Europe do not provide tea kettles in the rooms.
- Due to international events and trade fairs all throughout Europe such as the Air Show, music festivals, ice skating championships etc., you may have to stay in hotels further away from the city.
- In Switzerland the stay may be split in two hotels.
- Any damage caused to the hotel rooms / Coach during your stay shall be payable by the passengers.
- We also reserve the right to substitute a hotel of similar class if it is deemed advisable or necessary.
- In certain cities hotels have not started the buffet breakfasts yet and if the same does not change by the time the tours begin, we will either provide breakfast or the groups will be taken to an Indian / local restaurant for breakfast.

Coaches

- Most of your journey in Europe is by coach and hence you are requested to keep the coach clean.
- Due to hygienic reasons, it is not permitted to use toilets on the coach. However, the tour manager will make comfort stops during long drives.
- Eating & drinking is not permitted on the coach.
- One check-in bag and one handbag per person only, due to limited boot space on the coach.
- In major European cities, there are parking restrictions for coaches, and it may not be possible to stop at all the places during the city tour. Tour Manager will try his/her best to stop coach wherever possible for a photo stop.
- Coaches are non-wheelchair compliant. There are steps to board / alight from the coach.
- Due to private coaches being forbidden inside most of the European cities, as

per EU norms to preserve them and to avoid getting them polluted and overcrowded, most of your sightseeing will be done by local buses and on foot.

Meals

- Meals are pre-set and a-la carte is not possible.
- On certain days, a packed lunch will be provided.

Sightseeing

- On certain departures, we may sometimes amend/reverse the itinerary. However, all the services / inclusions will remain the same.
- Generally, you will have to walk to sightseeing places, amusement parks and the airports sometimes for a long distance; however, the same will be timely instructed by the Tour Manager. It is advisable to carry a good pair of comfortable sports shoes. The tour manager and the driver will do their best to get you as close to the monuments as possible.

General

- On some occasions you may have to join another group in case the group does not have adequate members.
- A local representative or a driver may only be there to assist you during your initial part of the tour.
- Arrival and Departure flights should be booked according to the group flight timings. In case there is any sightseeing involved on the first or last day of the itinerary to avoid missing any of the services. Please check with your sales officer for the group flight timings.
- Security alerts and random closures might affect the itinerary.
- Please take extra care of your personal belongings while on the tour, every country you travel to is prone to thefts and bag snatching. TCIL will not be liable for any loss of belongings / baggage.
- Disabled clients should carry their own wheelchair and should be accompanied by a qualified companion who is able to provide assistance to the disabled client.
- TCIL shall not accept any liability or responsibility for any damages, loss, baggage loss, theft, injury, accident, death, breakdown or irregularity, which may occur in carrying out the tour arrangement, weather conditions, strikes, war, quarantine and any other cause whatsoever and all such loss or expense must be borne by the passengers. Insurance policies must be carried while on tour.
- The management reserves the right to claim any additional expenses incurred due to delays or changes in schedules of train, airplane, bus, ship or other services.
- The Tour Manager and the company reserves the right to amend the itinerary, alter, vary or withdraw any particular departure, excursion advertised. For the convenience of our passengers, we will sometimes amend the itinerary. However, all the services will remain the same.
- There are no refunds for any services i.e., meals, sightseeing etc. not utilized on your tour.
- All optional activities will have to be booked and paid to the Tour Manager on Day 01 of the tour. Payments to be made by cash in EURO only. (Credit or Debit cards not accepted).
- Optional tours are booked & paid on 100% non-refundable & non cancellation policy.
- The images used in this brochure are for representation purposes only.
- Please refer to the Booking Form for detailed "Terms and Conditions".