



Mini Europe with London Family Fun Special

12 Days | 03 Countries | 18 Sightseeing & Cruise Experience

INCLUSIONS



Sightseeing



Hotels



Inter-City
Transfer



Meals



Experience
Manager

Thomas Cook (I) Ltd. Advantage



Thoughtfully Curated
Itineraries, Highly Rated
by our Customers.

Curated Indian Meals
with a Taste of Local Cuisine



Most Experienced
Tour Managers

Exclusive Experiences
& Destinations
that only We Offer.



Exclusive Offers
on Shopping

Highest rated
Holiday Brand



EUROPE TOUR ROUTE



United Kingdom

London

Paris

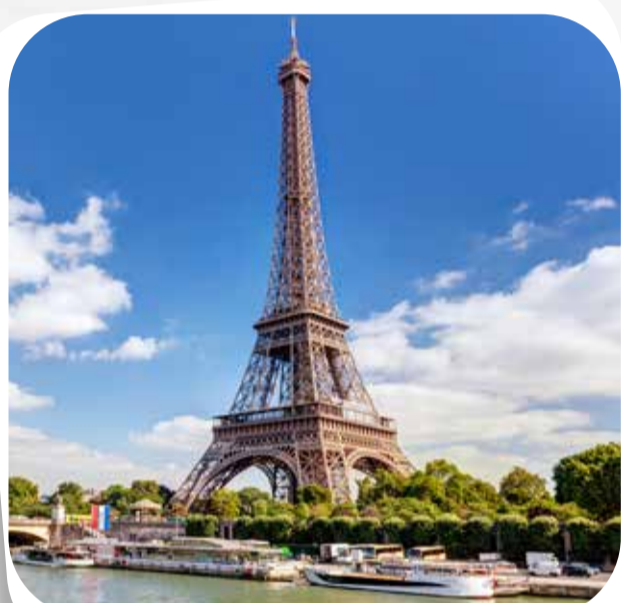
France

Zurich **Switzerland**

TOUR HIGHLIGHTS

UNITED KINGDOM

- Guided city tour of London with entrance to Natural History Museum
- Entrance to Madame Tussauds Wax Museum
- Ride on the London Eye
- Full day at Legoland



FRANCE

- Guided city tour of Paris
- Seine river cruise
- Visit 3rd level of Eiffel Tower
- Visit Disneyland® Paris (01 Day 01 Park)



SWITZERLAND

- Visit Charlie Chaplin Museum
- Visit Maison Callier Chocolate Factory
- Ride on the Scenic Golden Pass Train
- Orientation Tour of Gstaad
- Excursion to Jungfrauoch with lunch and Interlaken
- Visit Swiss transport Museum
- Orientation tour of Lucerne
- Cruise on Lake Lucerne
- Visit Mt Titlis
- Visit FIFA Museum



Inclusions

ACCOMMODATION



- 03 Nights at HI Express LHR / Radisson LHR or similar in London (LHR Area), **United Kingdom**.
- 03 Nights at nights at Moxy Marne la Valle / Novotel Marne la Valle or similar in Paris, **France**.
- 02 Nights at Hotel Agora by Fassbind / Central Residence or similar in Lausanne / Leysin / Villars, **Switzerland**.
- 02 Nights at Central / Terrace or similar in Engelberg, **Switzerland**.
- 01 Night at Novotel Zurich Messe /Harry's Home or similar in Zurich, **Switzerland**.

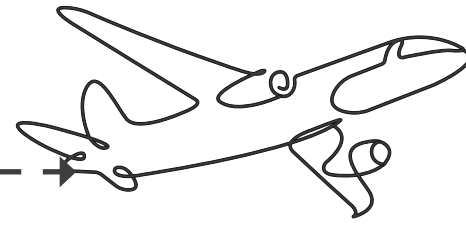


MEALS

- Daily Continental Breakfast (Breakfast includes Bread with Butter, Jam, Cereals, Juice, Milk & Coffee).
- 07 Indian Jain / Vegetarian / Non-Vegetarian Lunches.
- 11 Indian Jain / Vegetarian / Non-Vegetarian Dinners.

Note: Packed lunches, if applicable, will be Jain / vegetarian. In certain places, there is a possibility of providing cash out to the passengers instead of packed lunches.

YOUR ITINERARY



Day 1

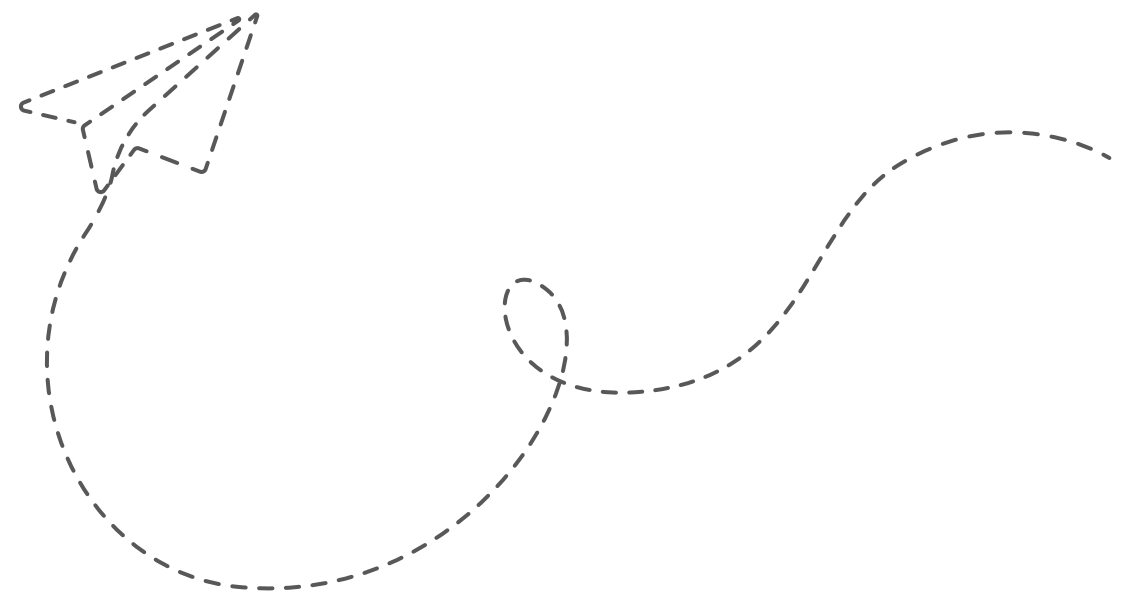


Welcome to London!

On arrival, our Tour Manager / Local Representative will meet and welcome you outside London Airport. Later, we proceed to the hotel and check-in.

Overnight in London (LHR Area), United Kingdom. (D)

Note: Joining direct passenger / NRI can check-in on your own at the hotel. The standard check-in time is 1500 hrs. We may have to proceed directly for dinner or packed dinner will be provided in case of late arrivals of flight or long queue at the immigration.



Madame Tussauds Wax Museum – Guided City Tour of London with entrance to Natural History Museum – Ride on the London Eye

Today, we visit the famous Madame Tussauds Wax Museum where you see wax figures, immersive zones, and experiences like the Spirit of London ride or Marvel Universe 4D. Next, we proceed on a guided City Tour of London: See the Buckingham Palace, Hyde Park, Big Ben, Westminster Abbey, Houses of Parliament, Trafalgar Square, Tower Bridge and Thames River with an entrance to the Natural History Museum which exhibits a vast range of specimens from various segments of natural history. Later, we enjoy a ride on the London Eye.

Overnight in London (LHR Area), United Kingdom. (B, L, D)

Day 2



Day 3

Full day at Legoland

Today, we proceed for a full day tour at Legoland: Whether you are earning your very first driving licence behind the wheel of a LEGO car at the LEGO City Driving School, riding a Dragon through a medieval castle or discovering a lost underwater city in your very own submarine – the LEGOLAND Resort has something for the whole family.

Overnight in London (LHR Area), United Kingdom. (B, D)



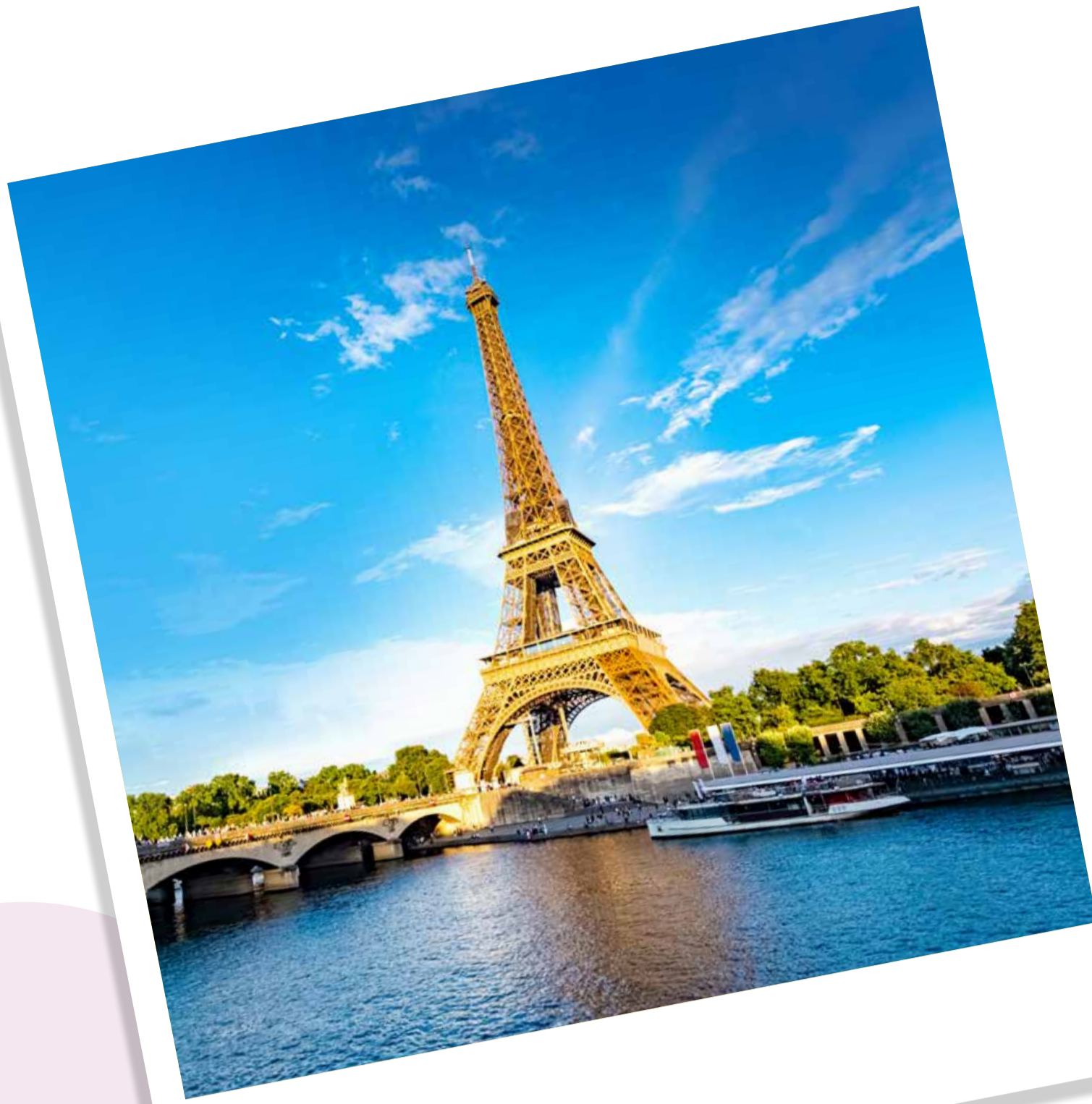
Day 4

Le shuttle / Ferry to Paris

Today, we proceed to Calais by the Le Shuttle / Ferry and onwards drive to Paris.

Overnight in Paris, France. (B, PL, D)





Day 5

Guided city tour of Paris – Eiffel Tower (3rd Level) – Seine River cruise

Today, proceed for a guided city tour of Paris: See the Alexander Bridge, Arc de Triomphe, Concorde Square, Opera House, Invalides and Champs Elysees. Next, we visit the Eiffel Tower (3rd level). Later, we enjoy a cruise on the Seine River.

Overnight in Paris, France. (B, L, D)

Note: • *Visiting Eiffel Tower 3rd Level is subject to availability due to weather conditions / temporary operational closures. In case of such, the group shall visit the Eiffel Tower up till 2nd Level.* • *Due to stringent security checks at the Eiffel Tower, it may take up to 4 – 5 hours in the queue.*

Disneyland® Paris (01 Day 01 Park)

Today, we proceed to Disneyland® Paris where you can visit Disneyland® Park OR Walt Disney Studios® Park (Up to 5 Hour Visit). Get charmed by Sleeping Beauty Castle, enjoy exciting rollercoaster rides, meet Alice in Wonderland, Pinocchio and others in Fantasyland as well as travelling to the four corners of the globe in Adventure Land.

Overnight in Paris, France. (B, D)

Day 6



Day 7

Onto Swiss - Orientation Tour of Geneva

Today, we drive to Geneva in Switzerland. On arrival, we enjoy an orientation tour: see the Palais des Nations - the European arm of the United Nations. Later, see the Jet d'eau - Geneva's famous fountain, the Floral Clock.

Overnight in Lausanne / Leysin / Villars, Switzerland. (B, D)



Day 8

Visit Charlie Chaplin Museum – Visit Maison Cailler Chocolate Factory - Golden Pass Train - Orientation tour of Gstaad

Today, we visit the Charlie Chaplin Museum in Vevey and explore some aspects of the life and legacy of Charlie Chaplin – one of the world's most renowned comic actors. Next, we visit The Maison Cailler Chocolate Factory to learn the art of chocolate making and to witness how the famous Swiss Chocolates are made. Later, we board the scenic Golden Pass train and enjoy panoramic views as we journey through alpine forest and picturesque villages. In the evening, we enjoy an orientation tour of Gstaad - a shooting location for Indian films.

Overnight in Lausanne / Leysin / Villars, Switzerland. (B, L, D)

Note: • *If Maison Cailler Chocolate factory is not available, we shall take the group to an alternate Chocolate experience.*

Day 9



Excursion to Jungfrauoch with Lunch & Interlaken

Today, we proceed for an excursion to Jungfrauoch - The Top of Europe. We take the cable car followed by a cogwheel train up to a height of 3,454 meters to Europe's highest railway station. Visit the Ice Palace and the Sphinx observatory deck to view the longest glacier in the Alps. Enjoy lunch on Top. Later, descend and visit Interlaken..

Overnight in Engelberg, Switzerland. (B, L, D)



Day 10

Swiss Transport Museum - Orientation Tour of Lucerne – Lake Lucerne Cruise

Today, we visit the Swiss Transport which exhibits all forms of transport including trains, automobiles, ships and aircraft as well as communication technology. Next, we proceed to Lucerne for an orientation tour: See the Lion Monument, and Kapel Brücke with some free time to shop for famous Swiss watches, knives and chocolates. Later, we take a Scenic cruise on Lake Lucerne.

Overnight in Engelberg, Switzerland. (B, L, D)



Visit Mt Titlis – Visit the FIFA Museum

Today, we proceed to Mt. Titlis where you will take cable car rides including the world's first rotating cable car, the Rotair – to the top of Mt. Titlis at 3,020 meters. Do visit the “Cliff Walk” - a suspension bridge along the cliff of Mt. Titlis.” Next, we visit the FIFA Museum which exhibits over one thousand objects. These include memorabilia from every FIFA World Cup and FIFA Women's World Cup, the most famous one being the original FIFA World Cup Trophy.

Overnight in Zurich, Switzerland. (B, L, D)

Day 11



Day 12

Fly back home with pleasant memories!

Today, we proceed to Zurich airport for your flight back home. Kindly spare a few minutes to share your feedback with your Tour Manager. Your valued suggestions will be most appreciated. Arrive home with pleasant memories of your Europe tour, which we are sure you will treasure for a lifetime. (B)



Note: • *Due to flight connectivity, few groups may depart out of Frankfurt or Milan instead of Zurich. Kindly check with your sales staff for your exact flight details.*

• *In major European cities, there are parking restrictions for coaches and it is not possible to stop at all the places during the city tour. Your Tour Manager will try his/her best to stop coach wherever possible for a photo stop.*

• *Arrival / Departure Transfers will be provided subject to minimum 4 passengers travelling together.*

DEPARTURE DATES

March'26	18
April'26	22
May'26	13, 27
June'26	10, 24
August'26	12
October'26	14
November'26	11
December'26	23

12 Days - Mini Europe with London Family Fun Special (Tour Price per person)

Twin/ Triple	Child with Bed	Child No Bed	Infant
USD 3,980	USD 2,770	USD 2,485	0

Single room supplement USD 905 per person. *As a 3rd in a triple, a roll away cot may be provided. **As a 3rd in a double, no bed or cot will be provided to the child. Person below 12 years will be considered as a Child. • Maximum 3 persons are allowed per room.

What Your Tour Price Includes

- Sightseeing and accommodation as per the above-mentioned itinerary.
- All transfers and extensive excursions with entrance fees (as specified in the itinerary) by a deluxe air-conditioned coach.
- Services of a professional, friendly and multilingual Tour Manager or a local Representative. (Subject to minimum 15 customers).

What Your Tour Price Does Not Include

- Air tickets required to participate in this tour.
- Visa charges, Insurance, Airport & Port taxes.
- Tipping is expected from anyone providing your service e.g., Coach Driver, Local Guides, Hotel & Restaurant staff etc. It is mandatory to tip a nominal amount of EUR 3 per person/per day. For the entire duration of this tour, which is 12 Days, the total Tips amount is EUR 36 per person to be paid to the Tour Manager on Day 01 of the tour.
- No portage included.
- Any expenses of a personal nature such as portage, laundry expenses, wines,

mineral water, food and drink not in the regular menu provided by us, minibar, telephone calls, etc.

- Meals other than that are mentioned in your itinerary.
- Cost of excursions, city sightseeing, entrance fees and local guides availed of by the passengers, other than that mentioned in your itinerary.
- Airport transfers, Cost of Suggested / Optional Excursions.

Visa Requirements

- You must be in possession of a Multiple Entry Schengen & UK Visa. The cost of visa is not included in your package tour price. It would be best to check with nearest consulates or embassy or your travel agent for visa information. Please ensure that your travel documents are ready in time before your tour date..

Ticketing Requirements

- For this tour you would require confirmed air tickets to arrive into London and depart from Zurich. It would be advisable to check with your sales officer or local travel agent for ticketing.

IMPORTANT NOTES

Joining Direct Clients

- Main Sector air tickets to reach the first overnight city and last departure city is not included in the Joining Direct package price.
- Arrival and Departure Transfers are not included in the package price.
- The Tour Manager shall meet the clients directly at the hotel.

Hotels

- All hotels will be either around the airport area or on the outskirts.
- The hotel room size in Europe would be up to 16 – 18 sq. mts.
- Most hotels in Europe have only Twin beds. The double bed will be Queen size and not King size.
- As a 3rd person in a triple room, most hotels use rollaway beds and room size may be the same as the double room.
- For Child with bed: At times hotel don't have enough roll away beds, in that case they might give a double and a separate single room.
- A person 11.99 years and below is considered a child and 12 years and above, an adult.
- Hotel rooms may not be air conditioned / air cooled nor will fans be provided. Air conditioning / cooling in hotels are set as per European weather conditions.
- Functioning of Air cooling / Air conditioning in hotels is subject to official declaration of summer by the local authority.
- During heat wave in Europe air conditioning of the hotels and coaches may cease to function as they are not built for such high temperatures.
- Most hotels in Europe do not provide tea kettles in the rooms.
- Due to international events and trade fairs all throughout Europe such as the Air Show, music festivals, ice skating championships etc., you may have to stay in hotels further away from the city.
- In Switzerland the stay may be split in two hotels.
- Any damage caused to the hotel rooms / Coach during your stay shall be payable by the passengers.
- We also reserve the right to substitute a hotel of similar class if it is deemed advisable or necessary.
- In certain cities hotels have not started the buffet breakfasts yet and if the same does not change by the time the tours begin, we will either provide breakfast or the groups will be taken to an Indian / local restaurant for breakfast.

Coaches

- Most of your journey in Europe is by coach and hence you are requested to keep the coach clean.
- Due to hygienic reasons, it is not permitted to use toilets on the coach. However, the tour manager will make comfort stops during long drives.
- Eating & drinking is not permitted on the coach.
- One check-in bag and one handbag per person only, due to limited boot space on the coach.
- In major European cities, there are parking restrictions for coaches, and it may not be possible to stop at all the places during the city tour. Tour Manager will try his/her best to stop coach wherever possible for a photo stop.
- Coaches are non-wheelchair compliant. There are steps to board / alight from the coach.
- Due to private coaches being forbidden inside most of the European cities, as

per EU norms to preserve them and to avoid getting them polluted and overcrowded, most of your sightseeing will be done by local buses and on foot.

Meals

- Meals are pre-set and a-la carte is not possible.
- On certain days, a packed lunch will be provided.

Sightseeing

- On certain departures, we may sometimes amend/reverse the itinerary. However, all the services / inclusions will remain the same.
- Generally, you will have to walk to sightseeing places, amusement parks and the airports sometimes for a long distance; however, the same will be timely instructed by the Tour Manager. It is advisable to carry a good pair of comfortable sports shoes. The tour manager and the driver will do their best to get you as close to the monuments as possible.

General

- On some occasions you may have to join another group in case the group does not have adequate members.
- A local representative or a driver may only be there to assist you during your initial part of the tour.
- Arrival and Departure flights should be booked according to the group flight timings. In case there is any sightseeing involved on the first or last day of the itinerary to avoid missing any of the services. Please check with your sales officer for the group flight timings.
- Security alerts and random closures might affect the itinerary.
- Please take extra care of your personal belongings while on the tour, every country you travel to is prone to thefts and bag snatching. TCIL will not be liable for any loss of belongings / baggage.
- Disabled clients should carry their own wheelchair and should be accompanied by a qualified companion who is able to provide assistance to the disabled client.
- TCIL shall not accept any liability or responsibility for any damages, loss, baggage loss, theft, injury, accident, death, breakdown or irregularity, which may occur in carrying out the tour arrangement, weather conditions, strikes, war, quarantine and any other cause whatsoever and all such loss or expense must be borne by the passengers. Insurance policies must be carried while on tour.
- The management reserves the right to claim any additional expenses incurred due to delays or changes in schedules of train, airplane, bus, ship or other services.
- The Tour Manager and the company reserves the right to amend the itinerary, alter, vary or withdraw any particular departure, excursion advertised. For the convenience of our passengers, we will sometimes amend the itinerary. However, all the services will remain the same.
- There are no refunds for any services i.e., meals, sightseeing etc. not utilized on your tour.
- All optional activities will have to be booked and paid to the Tour Manager on Day 01 of the tour. Payments to be made by cash in EURO only. (Credit or Debit cards not accepted).
- Optional tours are booked & paid on 100% non-refundable & non cancellation policy.
- The images used in this brochure are for representation purposes only.
- Please refer to the Booking Form for detailed "Terms and Conditions".